



PHALLOSAN[®] forte

INSTRUCTIONS FOR USE

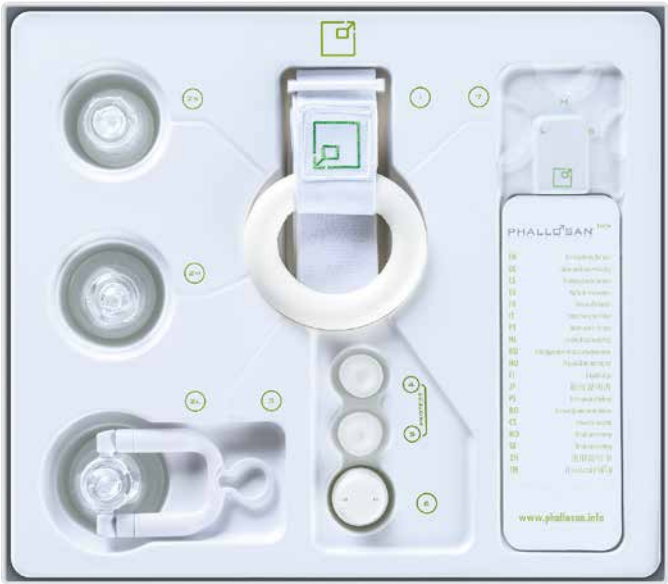
Congratulations on purchasing your PHALLOSAN® forte! PHALLOSAN® forte has been being used around the world with much success for 18 years. Prescription PHALLOSAN® forte is reimbursed by the health insurance companies. Our team consisting of urologists and medical technicians developed what we think is the most effective and innovative product of its kind, PHALLOSAN® forte.

Purpose and indications:

- PHALLOSAN® forte is recommended as a treatment for
- » penis enlargement-penis extension
 - » congenital/acquired penile curvature and induratio penis plastica (IPP)
 - » erectile dysfunctions
 - » post-surgical follow-up treatment after prostate surgery
 - » training the cavernous body of the penis at any age

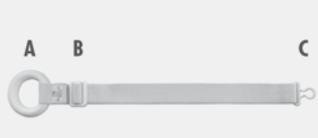
Package contents:

1. Elastic belt, which is strapped around the waist incl. foam-rubber ring (A), into which the penis is inserted all the way to the base. The buckle (B), with which you can adjust the length of the belt individually and adapter (C) on the belt, which is connected to the suction bell.
 2. a) Suction bell in size S with PHALLOSAN® forte – S-sleeve condom
 2. b) Suction bell in size M with PHALLOSAN® forte – M-sleeve condom
 2. c) Suction bell in size L with PHALLOSAN® forte – L-sleeve condom and assembled tension clip (3)
 3. Tension clip with tension spring attachment to adjust the intensity of the tension using a traffic light colour code system with adapter for the belt.
 - 4./5. Protector cap to protect glans against strong tension settings.
 6. Suction ball with 3-way valve
 7. Measuring template
- Instruction Guide
Traveller Bag with 4 extra sleeve condoms (1xS, 2xM, 1xL)



Preparation

1. Belt



Spread the orthopaedic PHALLOSAN® forte belt out in front of you and adjust it to its longest length using the buckle (B).

2. Selection of the suction bell/sleeve

Determine your correct suction bell size using the enclosed measuring template (7). Pull the flaccid penis away from your body and take measurement on the penis shaft.



The bell in size M (2c) is already connected to the sleeve size M (2c) and the tension clip with tension spring attachment in the set.

Should you require a different size, please remove the tension clip (3).

Now, please take your appropriate bell and adapt it using the suction ball; it only snaps into the position with the arrow symbol (↕). The appropriate sleeve (2) is slipped over the bead of the bell and the tension clip (3) is reattached.



When attaching to the bell, it must be observed that the bead of the bell snaps into the groove on the sleeve on the thick end of the sleeve. If the sleeve is pulled too far over the bead of the bell, the sleeve can rupture.



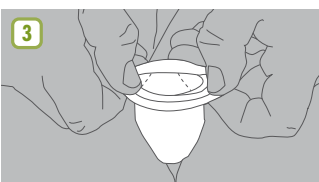
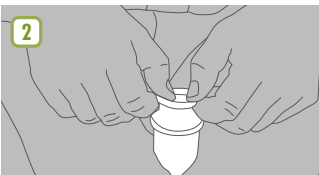
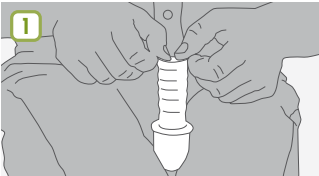
Top: Wrong, pulled too far over the bell and not powdered!

Bottom: Right and powdered.

Please observe that the sleeve loses its coating after several days. Therefore, you should purchase baby powder and apply this to the outer surface of the sleeve. It forms a protective coat, which protects the sleeve against friction, adhesion and tearing.

Clamp it the suction bell between your knees. With a slight pull, carefully roll the sleeve condom 0.40 inch to the edge of the suction bell and pull it behind the bead of the suction bell.

Please be careful and do not damage the sleeve with sharp fingernails or the like. Do not pull hard when rolling back.



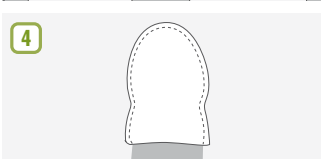
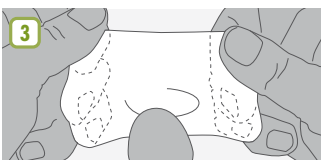
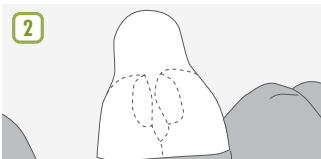
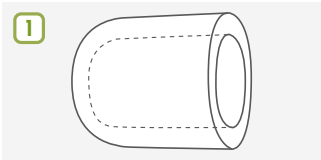
Special features of the new PHALLOSAN® forte sleeves

The PHALLOSAN® forte sleeves consist of medical silicone, thus ruling out the risk of irritation or allergic reactions. This innovation not only offers you more comfort but also provides a uniquely snug fit around the penis. A part of it is approx. 3 mm thick, that is where it is attached to the bell; its thinnest area is 0.3 mm thick, to smoothly adapt to the shaft of your penis.

Your perfect suction bell is now ready for use!

3. Protector cap

Please remove the protector cap (4/5), which fits any penis size. Pull the protector cap apart using both hands and slip it over the glans. It should fit snugly.



After fitting the cap, it is important to make sure that as little air as possible remains at the tip of the glans. It can be helpful to slip the protector cap over the penis when the latter is in a slightly erected state. The protector cap should protect the glans against the effects of possible excess tension.

Experienced users can usually do away with the protector cap after a few weeks.

All necessary preparations for the application have now been completed.

Application:

1. Now, insert the penis including the protector cap into the suction bell and roll the sleeve back from the bead of the bell over the penis.



2. Turn the green protruding marker on the valve of the suction ball (6) to the suction symbol and press the suction ball several times with your fingers. By doing so, the glans is drawn further into the bell. The sleeve smoothly adapts to the shaft of the penis.



3. Now, turn the green protruding marker on the valve of the suction ball (6) to the lock symbol, to maintain the micro-vacuum.



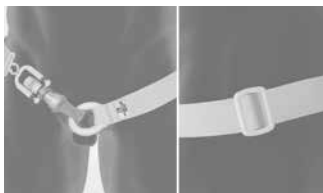
4. Now, please take the belt previously spread out before you and slip the white foam-rubber ring (A) over the complete suction bell apparatus until it rests against the root of the penis.

5. Now, pull the end of the belt around your waist.

6. Turn the open end of the tension clip (3) towards your body and connect both eye-lets (C).



7. Tighten the fit of the belt using the belt buckle (B) until you can feel that your penis is being stretched and the traffic light colour code system indicates green. Please make sure that the belt slants upwards in the groin area. To do this, pull the belt upwards around the buttocks towards the waist. If the belt slips to the fold of the buttocks, i.e. parallel to the penis, the tension will be further increased when sitting, which may be unpleasant.



8. You can now carry on with your everyday business or also wear PHALLOSAN® forte while sleeping, given that your blood circulation is not restricted at any time.

Ending the application

First, please take the belt off and turn the green valve of the suction ball to the arrow symbol. The vacuum escapes. Please roll the sleeve carefully back towards the hard plastic cup and remove the complete suction device. **Do not stretch the sleeve with your fingers, to remove the vacuum, as it will otherwise rip immediately!** It will be easily removed when simply rolling the sleeve upwards.

Special technical features

Put simply, this apparatus is a suction bell with a seal. Therefore, it is not important how far the sleeve reaches over the penis shaft. The sleeve is not designed to transmit force to the penis. This solely takes place by the micro-vacuum formed in the bell.

Should you feel that the vacuum has slightly decreased while wearing the apparatus and the glans has possibly slipped too far out of the bell, this can be the result of several factors. In any case, air is penetrating. This can take place via the penis shaft if pubic hair was not diligently removed or a sleeve, which is too wide, was selected.

As far as necessary, please remove possible pubic hair from the penis. This can be done by shaving or using a mild hair removal cream.

Remedy

Turn the green protruding marker on the valve of the suction ball away from the lock symbol to the suction symbol. In this manner, draw the glans back into the bell and close the valve by turning the green protruding marker back towards the lock symbol.

If the glans is still slipping out of the bell, the cause is definitely the sleeve, which is apparently too wide.

You have the option of adjusting this individually to your size and in doing so, achieving optimum efficiency. For example, if you feel that the M bell is the correct size but the sleeve is too large for the penis shaft, you can place the S sleeve on the M bell. You can do the same with the L bell and the M sleeve.

Under no circumstances can you place the S sleeve on the L bell. This can cause the material to rupture.

Instructions for care FORTE/PLUS:

The sleeve can and should be detached from the bell and should be washed in lukewarm water for hygienic reasons.

Keep the sleeve rolled up until you need it again.

Please never forget to apply baby powder to the outside of the sleeve after use when rolled out.

The suction bell should also be cleaned daily as described above. Do not forget to remove the suction ball first by moving the green protruding marker on the valve of the suction ball towards the double arrow. Carefully pull the suction ball out of the suction bell. The suction ball may not come in contact with water or oil because the sensitive valves would then no longer function efficiently.

Step-by-step plan for the precise adjustment of the tension of the belt to the connective tissue of the penis.



Preamble:

The body's connective tissue depends on the respective hereditary disposition. Therefore, we developed a traffic light colour code system, to enable you to adjust the belt tension precisely to your type of connective tissue. In any case, please make sure that the tension is in the lower green range in the beginning. This will help you achieve optimum results for penis enlargement in length and width without any negative side-effects.

Day 1

Only set the tension in the lower green range and do not wear PHALLOSAN® for more than 1 hour. Remove the belt and turn the green protruding marker on the valve of the suction ball towards the arrow symbol. The vacuum escapes.

Carefully roll the sleeve back towards the glans and remove the suction bell apparatus.

Now, examine the point on the penis between the opening of the urethra and the frenulum on the underside of the glans. This is the most sensitive tissue on the penis. If it is reddened or swollen, the belt tension was too tight. Suspend the application for today. If you detect changes on the penis, do not begin application again until these have subsided.

Day 2 to 8

If you were able to wear PHALLOSAN® forte on the previous day without suffering from discoloration or swelling on the points in question, you can wear PHALLOSAN® one hour longer.

Extend the period of wear every day by one hour. After 8 days you will have adjusted to wearing the apparatus.

After the adjustment period PHALLOSAN® can also be worn at night. You will notice that you can feel nubs on both symbols for pumping and locking, which enables pumping or locking without having visual contact. The sleeve expands during night-time erections; circulation is not impeded, it is improved.

You will wear PHALLOSAN® forte with enthusiasm. Your penis can become measurably longer and thicker in only a few weeks. You will experience positive side effects such as a stronger sex drive and greater pleasure.

Period of application:

PHALLOSAN® should be worn 8–10 hours per day, 6 days a week, and at any time even longer!

Side effects/Precautions

PHALLOSAN® forte is used at your own risk however, it does not pose any risks if used according to the instructions. Particularly during the first weeks of application, excess tension on the penis should be avoided.

If swelling and/or blisters occur on the foreskin or on the glans, the belt will have been set too tight. It is imperative to discontinue use until the swelling or blisters have disappeared. Then set the tension somewhat looser.

Occasionally you can feel pressure pain on the penis shaft; this can result from the bulging end of the sleeve resting on the silicone rubber-foam ring and therefore, cause pain.

All serious incidents relating to the device must be notified to the manufacturer and the competent authority of the Member State in which the user and/or patient is established.

Remedy:

Slightly roll the end of the sleeve back from the silicone rubber-foam ring; pressure pain will no longer occur.

You can also distribute the tension of the belt over the body, to reduce tension on the root of the penis. Take hold of the belt where the suction bell is connected to it and lead the tension around the body to relieve the root of the penis. It sounds complicated but it is not; the tension is now distributed throughout the entire area of the belt.

Contraindications:

After consuming alcohol, after taking drugs as well as painkillers, sleeping pills and tranquilizers because your natural perception of pain may be compromised and you may not be able to promptly react to pain. Avoid using PHALLOSAN® forte in the event of infections or open wounds on the penis.

How do I measure the exact increase in the length of my penis?

Please use a foot rule. A measuring tape is not suitable. Hold your penis in a flaccid state away from your body (90 degrees). Position the

foot rule on the side of your penis (as seen looking down). Press the rule against your pubic bone.

Important

Before beginning with the application, determine your exact body weight without clothing. In the event of a possible weight gain, a layer of fat forms – in particular – in the pubic area of the pubic hair around the penis. This layer of fat reduces the distance between the tip of the penis and the pubic bone, thus falsifying (shortening) the result. Physicians call this an abdominal apron.

Repeat orders

All parts for PHALLOSAN® forte can be reordered individually from us. Should you have any other questions or suggestions, feel free to contact our experts at any time free of charge. You merely have to pay the normal telephone charges. At all times, we reserve the right to make technical modifications, which we will also make available on the Internet at

www.phallosan.com
www.phallosan.co.uk

Hotline:

Phone +423 235 84 77
(Liechtenstein, Mo-Fr 14-16 TIME MEZ)
service@swissana.com
for more Information:
www.phallosan.info

Your PHALLOSAN® forte Team

PHALLOSAN® PLUS+ INSTRUCTIONS FOR USE

Please read the instructions for use before using PHALLOSAN® plus+. This is an additional set for PHALLOSAN® forte and can only be used in combination with the package PHALLOSAN® forte!

For instructions to PHALLOSAN® forte please visit www.phallosan.info!

Package content PHALLOSAN® plus+:

1. The Adapter Leverage
 - » applicable for every bell size
 - » flexible move
 - » safety clip
 - » easy removing
 - » patent
2. The Rod System with White Base Ring
 - » to be extended for every penis size
 - » optimal tension
 - » optional high a comfort force
3. Protector Cap
 - » a pressure suit for the glans area
 - » higher results through
 - » more Force
 - » more safety
 - » higher Performance

Package content PHALLOSAN® forte:

4. Hard Plastic Bell with attached Sleeve Condoms
 - » up to 4 sizes for every manhood
 - » transparent safety
 - » optional mid-size (large bell-medium sleeve)
 - » anti-allergic material
 - » 3 valve system
 - » comfort meets effectivity
5. Integrated Vacuum Pump
 - » creates micro vacuum
 - » no harm to tissues/spongy bodies/veins
 - » better result
 - » maximum output



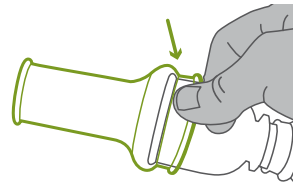
Preparation:

1. Selection of the suction cup / sleeve (from PHALLOSAN® forte package)

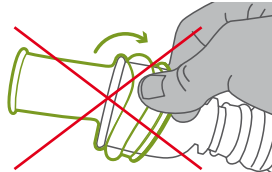
Choose the correct Hard Plastic Bell and sleeve condom size using the measuring template. Pull the flaccid penis away from your body and take measurement on the penis shaft.

Attach the Vacuum Pump on the hard Plastic Bell; it only engages into the position with the arrow symbol (↑). Turn it to the pump symbol (⬇).

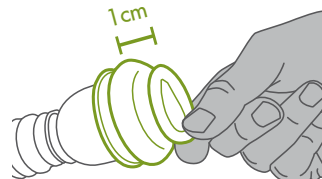
Roll the sleeve condom above the hard plastic Bell. When attaching the sleeve to the cup, please take care that the thick part (the groove) of the sleeve is positioned exactly on the edge of the hard plastic bell.



If the sleeve is pulled too far over the edge of the cup, the sleeve can be damaged.



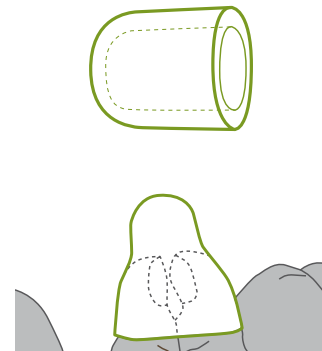
Carefully roll the sleeve to the edge of the suction cup until you have 1 cm space between the rolled up sleeve and the edge of the suction cup.



Now you can easily pull the rolled up sleeve behind the bead of the suction cup. Put the suction cup and rolled sleeve to the side and go to the next step.

2. Protector cap

Pull the protector cap apart using both hands and slip it over the glans area. It should fit cozy but tight.

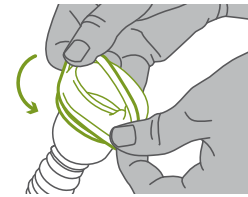
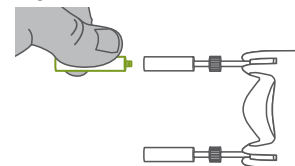


After placing the protector cap, it is important to make sure that as little air as possible remains at the tip of the glans.

Now put the complete Hard Plastic Bell/Sleeve/Pump aside.

3. PHALLOSAN® plus+

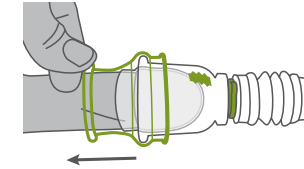
Take the Rod System and hold the White Base ring right next to your Penis Root. Extend or minimize the rods so they are 5 cm (2 inch) longer than the flaccid Penis.



Place the white base ring above your penis (best while sitting). Attach the adapter Leverage to the end of the Rods.

Application:

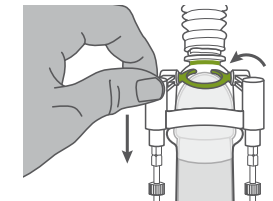
1. Now, take the already Prepared Hard Plastic Bell/Sleeve/Pump. Place the Glans area half way into the Bell and Roll the sleeve condom off as far as you like.



2. Press the pump 3-5 times and turn the green valve to the Lock Symbol.

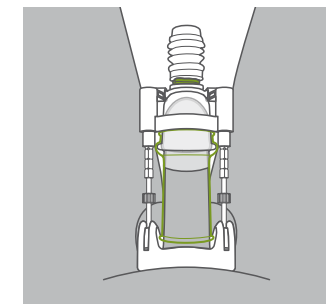


3. Lastly you press the Rods with the Adapter Leverage down and the C clip on to the hard plastic bell and let go.



4. You should feel and see that the Penis is now being stretched.

Important: it is not about the high force but continuity to achieve the highest output.



How to remove PHALLOSAN® plus+:

First, please turn the green valve of the suction ball to the arrow symbol. The vacuum escapes. Please roll the sleeve carefully back towards the hard plastic cup and remove the complete suction device. **Do not stretch the sleeve with your fingers as it will otherwise rip immediately.** It will be easily removed when simply rolling the sleeve upwards.

Side Effects / Precautions

PHALLOSAN® plus+ is used at the user's own risk, but is safe if the instructions for use are followed. However, especially during the first few weeks of use, the penis should not be pulled too hard.

If swelling and/or blisters appear on the foreskin or glans, the setting is too strong. It is essential to pause until the swelling or blisters have healed.

Then adjust the tension a little lighter. Please be patient, the procedure is comparable in success to a jaw adjustment. The continuity of the stretching, not only the strength of the tension, is the guarantor of success!

Attention: The use of Phallosan plus is not suitable during sleep! Please use PHALLOSAN® forte for this purpose.

You have now the perfect combination of traction. No matter for what purpose:

Penis Extension:

Use Adapter Leverage for at least 6 hours a day, 5 days a week.

It is not about a high Force, it depends on the continuity to achieve a Cell Stimulation.

Through this, new cells will be implanted and a possible increase in length of 1.9 inch and 1.1 inch in girth can be achieved.

Erectile Dysfunction:

5 hours, 3 Days a week will achieve a much higher Blood circulation and therefore stimulates your Prostate and sexual desire.

The spongy bodies will be able to capture more blood and therefore erections will come more frequently and be more durable.

IPP/Penis Curvature:

IPP/Penis Curvature can be healed with the combination of PHALLOSAN® forte and the

Adapter leverage. Important: use PHALLOSAN® forte for 4 days a week and the Adapter leverage for 2 days to straighten the curve.

The curvature will be straightened as new cells are implanted into the scar tissue around the bended area. Through this the penis will be straightened.

Contact:

E-Mail: service@phallosan.com

For more information:

www.phallosan.info

Your PHALLOSAN® team



PHALLOSAN® forte
PHALLOSAN® plus+

READ THE COMPLETE INSTRUCTION FOR USE BEFORE USING THE PRODUCT!

WARNING: THE FOLLOWING PRECAUTIONS MUST BE OBSERVED

The device **must not** be worn during bowel movements, during sports activities, during intercourse or other strenuous physical activity.

Neither should it be worn after consumption of alcohol or ingestion of pain-killers or euphorants or if there are

- any wounds or infected areas on the penis or where PHALLOSAN® is attached at the body.
- If pain, numbness or discoloration of the penis head,
- or any other untoward reaction occurs the device must be loosened and removed immediately.

In case of wounds on the penis the device **must not** be worn until these have healed entirely.

In the case of surgery, **do not** use PHALLOSAN® forte/PHALLOSAN® plus+ until your doctor tells you to.

Do not use PHALLOSAN® forte/PHALLOSAN® plus+ if you have problems with venous problems or connective tissue weaknesses.

Do not use the device when you have any kind of piercing at the genital area.

The device **should not** be worn while moving in areas where there is an

increased risk of falling and caution must be exercised when climbing stairs, walking on slippery floors etc.

The device **should not** be worn neither when handling any kind of machinery, motorized vehicles or hot objects nor when bicycle or cooking.

Do not use any creams, Vaseline and other moisture substances while wearing/using the device.

Use the device **only as we describe** in the manual, **do not** use any other materials than the ones we provide you or use other wearing techniques than the ones we tell you in the manual.

We **do not** take any responsibility and we are not liable for any damage caused through use of products or services purchased through this website, be it indirect, special, incidental or consequential damages (including but not limited to damages for loss of business, loss of profits, interruption or the like). If you have any questions regarding the terms of use outlined here, please do not hesitate to contact us at any time.



Swiss Sana AG
Kirchstrasse 3
9490 Vaduz
FL-Liechtenstein

☎ 00423 235 84 77

Email: service@swissana.com

In case of risks or side effects
please contact your doctor
or our Phallosan hotline



REF 5000

